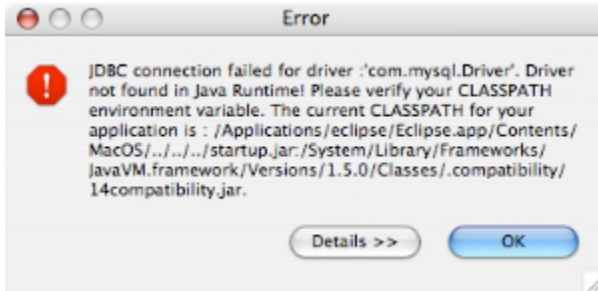


# JDBC and Entity Modeler

**Problem:** You encounter the 'JDBC connection failed for driver ...' error message when trying to generate SQL in Entity Modeler.



## Discussion

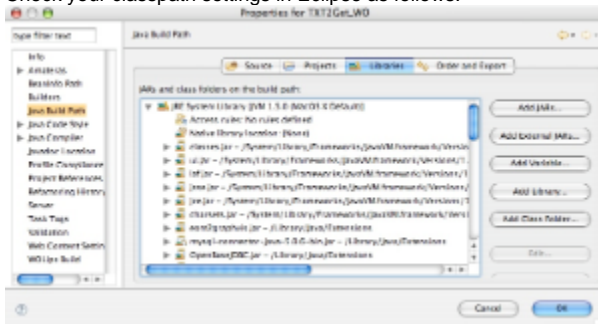
Either the JDBC driver genuinely cannot be found, or more likely perhaps, your JDBC settings in Entity Modeler are incorrect.

On Mac OS X, the /Library/Java/Extensions directory is provided for extensions to the core Java API, and is thus the appropriate place for JDBC drivers.

Put your JDBC drivers into the /Library/Java/Extensions then, and they should be picked up automatically by Eclipse.

## Solution - check that your JDBC driver is in your CLASSPATH:

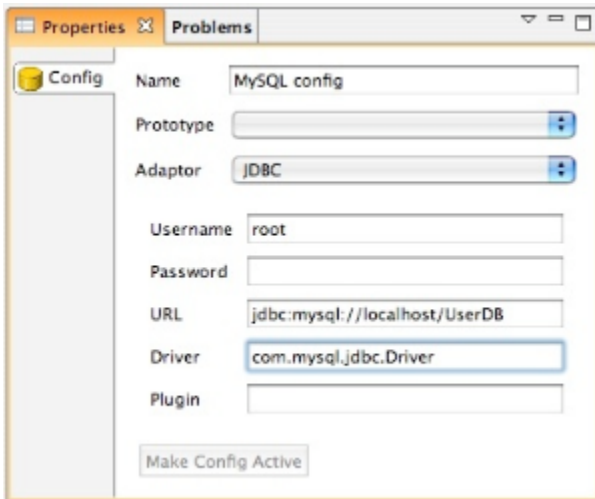
Check your classpath settings in Eclipse as follows:



- Right-click the project in Package Explorer
- Select Java Build Path from the left hand list, and Libraries from the tabs in the main field
- Open the JRE System Library list, and you should see your available JDBC driver (see screenshot)
- If you cannot see your driver listed, you must add it. [WOL:instructions required]

## Solution - check JDBC settings in Entity Modeler

Check that the settings for your JDBC driver are correct; these details are provided by the suppliers. MySQL settings are shown in the screenshot (see screenshot). Note that drivers have peculiar use of capitalization, and that *this must be correct* for the driver to function!



## List of JDBC driver settings

### Derby JDBC driver settings:

Embedded Derby, how is it done?

How do you set property derby.system.home so Entity Modeler can be used?

### MySQL JDBC driver settings:

URL: jdbc:mysql://<hostname>/<database\_name>. eg. jdbc:mysql://localhost/authors

Driver: com.mysql.jdbc.Driver

### OpenBase JDBC driver settings:

URL: jdbc:openbase://<hostname>/<database\_name>. eg. jdbc:openbase://localhost/authors

Driver: com.openbase.jdbc.ObDriver

### FrontBase JDBC driver settings:

URL: jdbc:FrontBase://<hostname>/<database\_name>. eg. jdbc:FrontBase://localhost/authors

Driver:

### Postgresql JDBC driver settings:

URL: jdbc:postgresql://<hostname>/<databasename> eg. jdbc:postgresql://localhost/authors

Driver: org.postgresql.Driver

Plugin: Postgresql

### H2 JDBC driver settings:

URL: jdbc:h2:~/<databasename>

### Oracle JDBC driver settings:

URL: jdbc:oracle:thin:@<hostname>:1521/SID using Java jar ojdbc6.jar downloaded from Oracle's website (account needed, but free)