

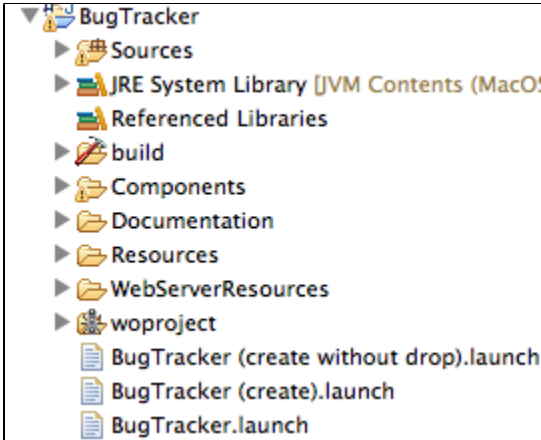
Getting Started with BugTracker

Getting Started with BugTracker

BugTracker is an example application that exposes a lot of Wonder functionalities. It is especially true if you want to have a look at DirectToWeb (D2W) since BugTracker have a lot of custom D2W rules.

You can listen to a good introduction to BugTracker by listening to the [presentation](#) made at WOWODC 2007.

To look at BugTracker, you will need to [get the Wonder Source Code](#) of Project Wonder. Once it's done and that you have imported the BugTracker project into Eclipse, you will see the following files:



To launch BugTracker, right-click **BugTracker.launch** and select **Run As -> BugTracker**. It will launch BugTracker with a in-memory database, which is perfect to explore the application.

You should see a login screen. Your default administrative user is "admin" with password "admin"

Bug Tracker

Username:	<input type="text" value="admin"/>
Password:	<input type="password" value="....."/>
d a r t e N	
<input type="text"/>	
Remember Password:	<input type="checkbox"/>
<input type="button" value="Login"/>	

Explore!!