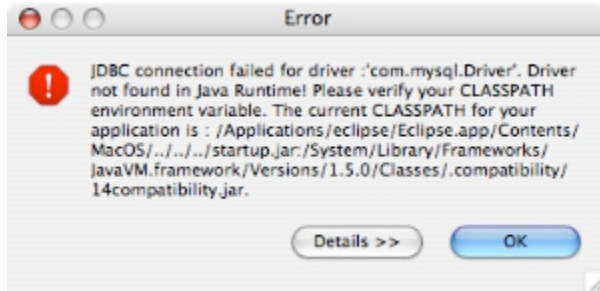


JDBC and Entity Modeler

Problem: You encounter the 'JDBC connection failed for driver ...' error message when trying to generate SQL in Entity Modeler.



Discussion

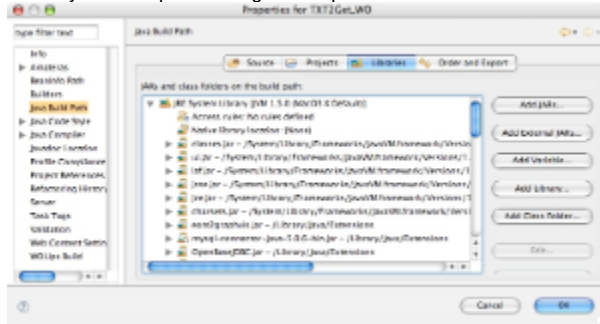
Either the JDBC driver genuinely cannot be found, or more likely perhaps, your JDBC settings in Entity Modeler are incorrect.

On Mac OS X, the /Library/Java/Extensions directory is provided for extensions to the core Java API, and is thus the appropriate place for JDBC drivers.

Put your JDBC drivers into the /Library/Java/Extensions then, and they should be picked up automatically by Eclipse.

Solution - check that your JDBC driver is in your CLASSPATH:

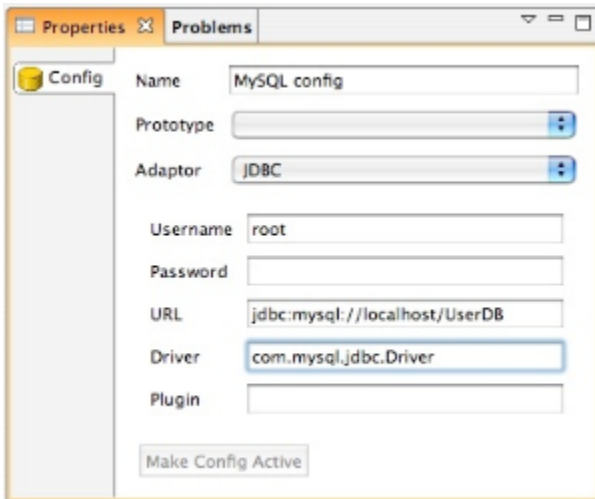
Check your classpath settings in Eclipse as follows:



- Right-click the project in Package Explorer
- Select Java Build Path from the left hand list, and Libraries from the tabs in the main field
- Open the JRE System Library list, and you should see your available JDBC driver (see screenshot)
- If you cannot see your driver listed, you must add it. [WOL:instructions required]

Solution - check JDBC settings in Entity Modeler

Check that the settings for your JDBC driver are correct; these details are provided by the suppliers. MySQL settings are shown in the screenshot (see screenshot). Note that drivers have peculiar use of capitalization, and that *this must be correct* for the driver to function!



List of JDBC driver settings

Derby JDBC driver settings:

Embedded Derby, how is it done?

How do you set property derby.system.home so Entity Modeler can be used?

MySQL JDBC driver settings:

URL: jdbc:mysql://<hostname>/<database_name>. eg. jdbc:mysql://localhost/authors

Driver: com.mysql.jdbc.Driver

OpenBase JDBC driver settings:

URL: jdbc:openbase://<hostname>/<database_name>. eg. jdbc:openbase://localhost/authors

Driver: com.openbase.jdbc.ObDriver

FrontBase JDBC driver settings:

URL: jdbc:FrontBase://<hostname>/<database_name>. eg. jdbc:FrontBase://localhost/authors

Driver:

Postgresql JDBC driver settings:

URL: jdbc:postgresql://<hostname>/<databasename> eg. jdbc:postgresql://localhost/authors

Driver: org.postgresql.Driver

Plugin: Postgresql

H2 JDBC driver settings:

URL: jdbc:h2:~/<databasename>

Oracle JDBC driver settings:

URL: jdbc:oracle:thin:@<hostname>:1521/SID using Java jar ojdbc6.jar downloaded from Oracle's website (account needed, but free)